

Programming Guide to the Azuga ELD[®] Platform

Installation of Digi Wireless Vehicle Device for use with Azuga ELD.

POWER WVA: Attach the Digi WVA to the vehicle diagnostic port.

Step 1 - Reset the Digi WVA device

NOTE: This step is only to be followed if the device has never been setup, or the device is being changed from Push Button pairing to PIN pairing mode or vice-versa.

1. Press the WVA button on the device and hold it down for at least 10 seconds. This will reset the device to its original factory settings and is necessary for initial configuration of Wi-Fi Direct.



Step 2 – Configure WiFi Direct through the following options:

2.1 Digi WVA Configuration via Azuga ELD Application

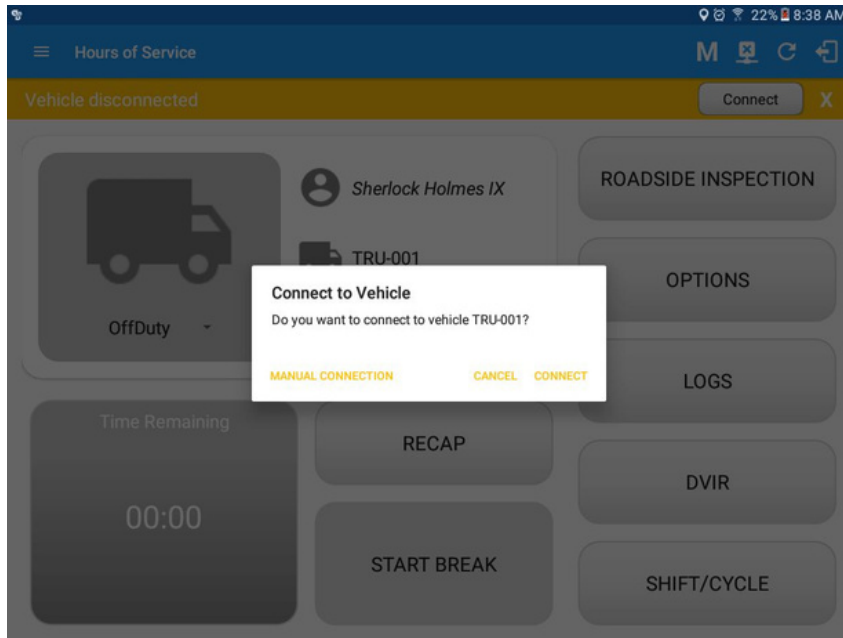
- Install Barcode Scanner from the Play Store
- Open Azuga ELD app (or Branded App)
- Log into the app
- On the main dashboard, tap the 'Connect' button which is located below the app header to display the 'Connect to Vehicle' dialog.

Programming Guide to the Azuga ELD[®] Platform

- At this point, 2 options were present in order to establish a connection to the VBUS device: Manual Connection and Auto Connection.

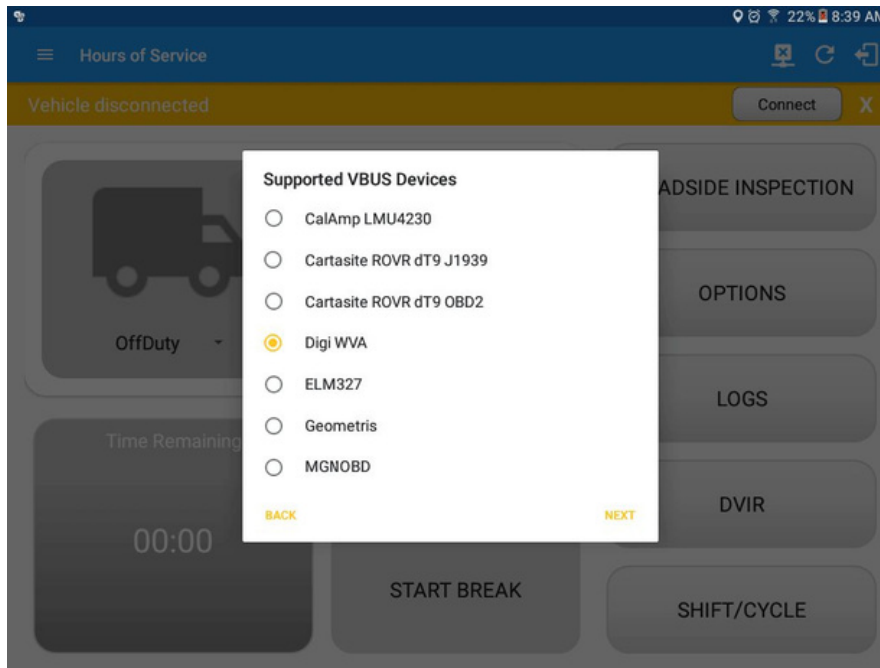
A. Manual Connection

1. Tap on the Manual Connection button



2. Select Digi WVA VBUS device

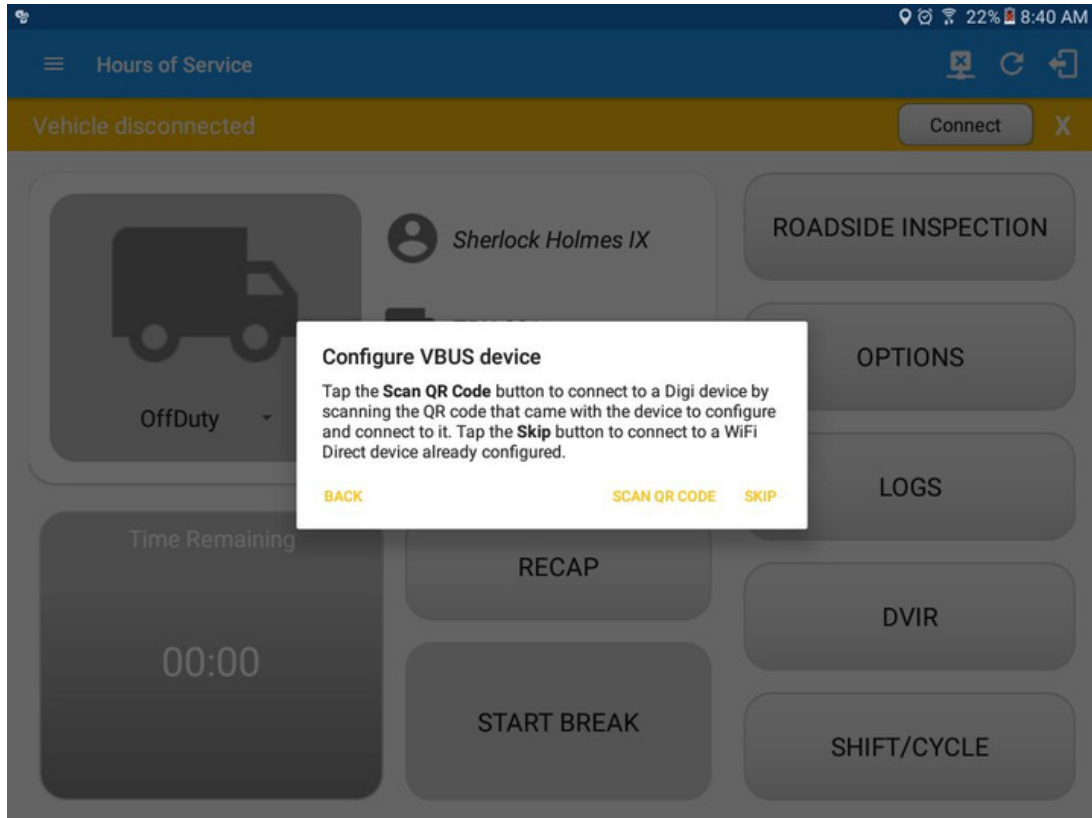
Programming Guide to the Azuga ELD[®] Platform



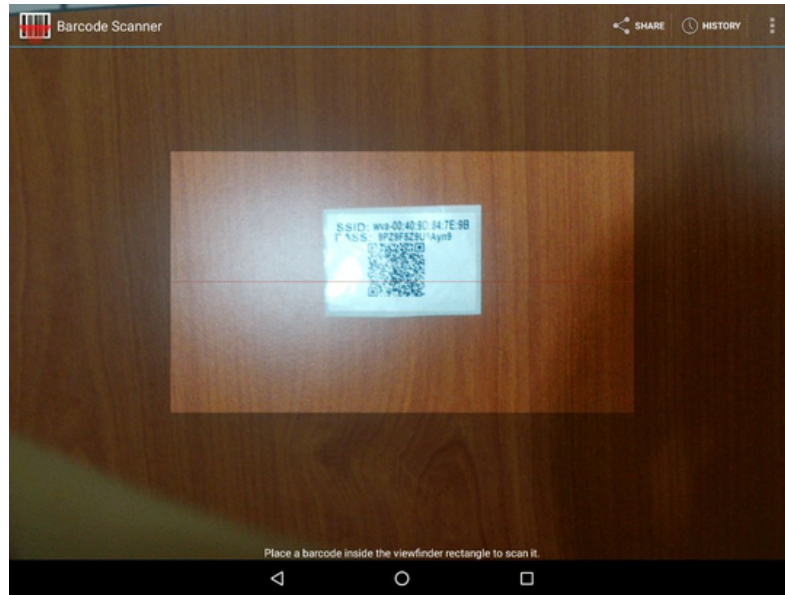
3. Tap on the Next button 4.

The 'Configure VBUS device' dialog will be displayed.

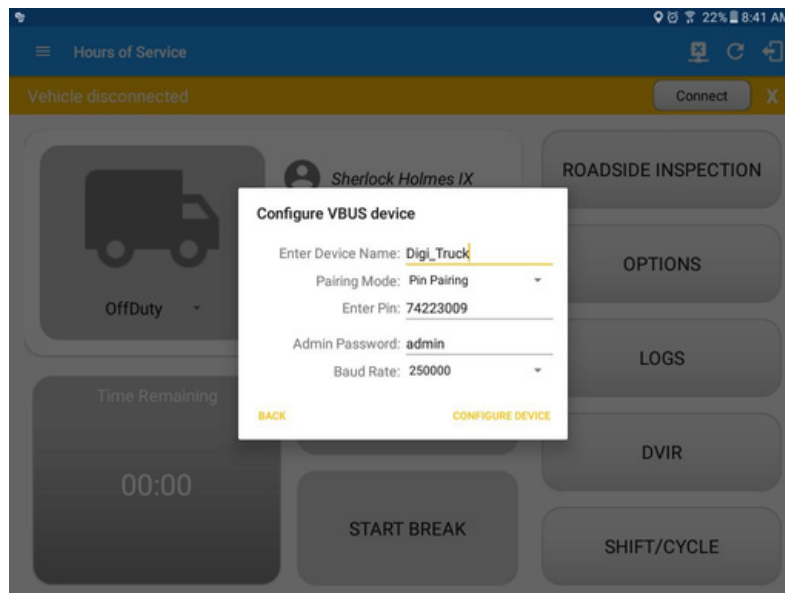
Programming Guide to the Azuga ELD[®] Platform



5. At this point, there are two ways to connect to the Digi WVA device; the first time the Digi is being configured, or connecting to an already configured device. To connect for the first time, follow the steps below starting at step 6. If the device is already configured, then start the connection on step 7.
6. Configure Digi VBUS device screen will then display. Connect to Digi device by scanning QR code.
 - a) Tap on 'Scan QR code'
 - b) Barcode Scanner app will then launched
 - c) Place Camera over QR Code



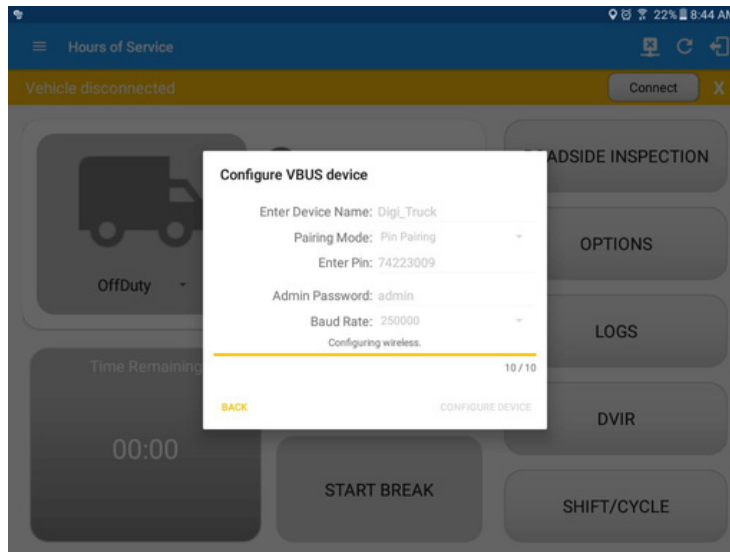
- d) If the scanning of QR code is successful, then Digi WVA Configuration screen will then be displayed.



- e) Enter a device name on the 'Enter Device Name' field. Example: "Digi_Truck"
-) Select a Pairing Mode
- f) ● If you select Pin Pairing mode

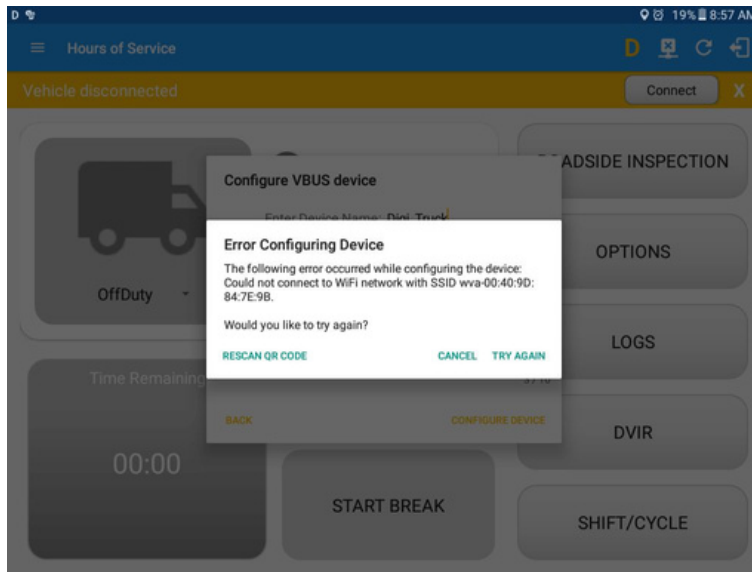
Programming Guide to the Azuga ELD[®] Platform

- o Tap on the drop-down option and select 'Pin Pairing'
- o Input a Pin on the 'Enter Pin' field. (Note: It requires 8-digit pin and a default value will be auto generated upon vbus configuration)
- o Input an admin password on the 'Admin Password' field. (Note: The admin password field will be auto populated by the Digi WVA VBUS device's default admin password)
- o Select a Baud Rate on the 'Baud Rate' drop down option list
- o Then tap 'Configure Device' button

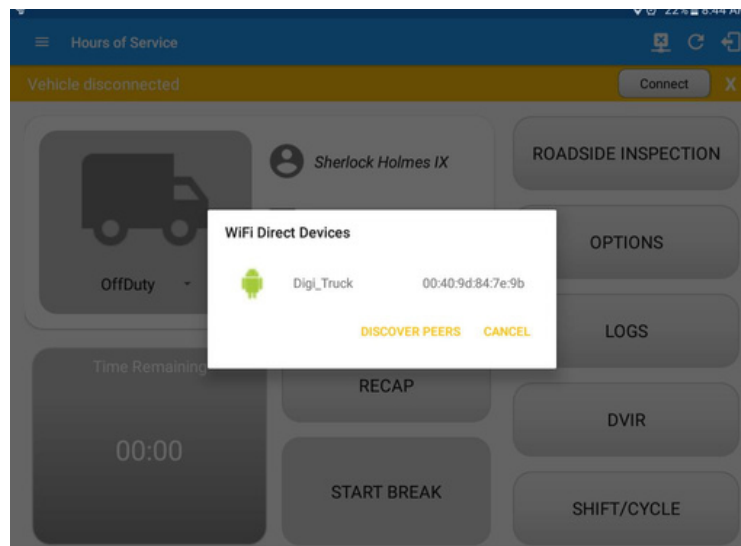


- If an error was encountered during configuration process, then an Error dialog will be displayed.

Programming Guide to the Azuga ELD[®] Platform

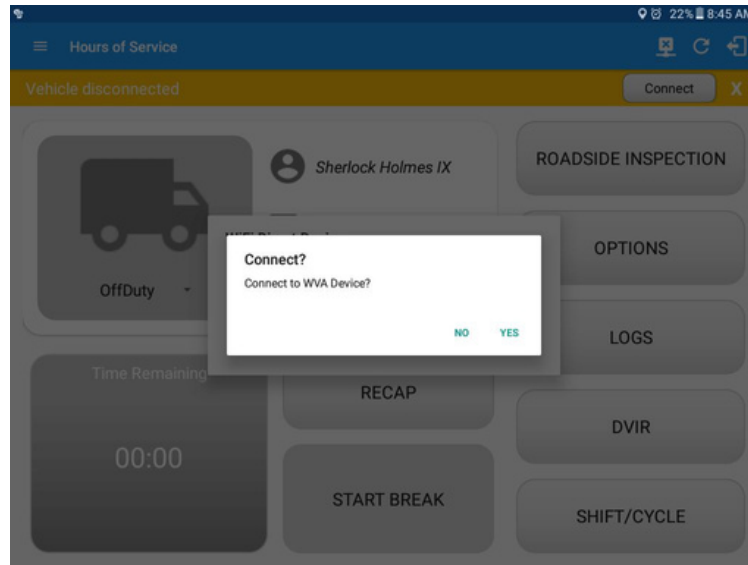


- o Upon successful configuration, the device will show up in the Available devices after the Discover Peers process
- o Tap the device name you recently configured



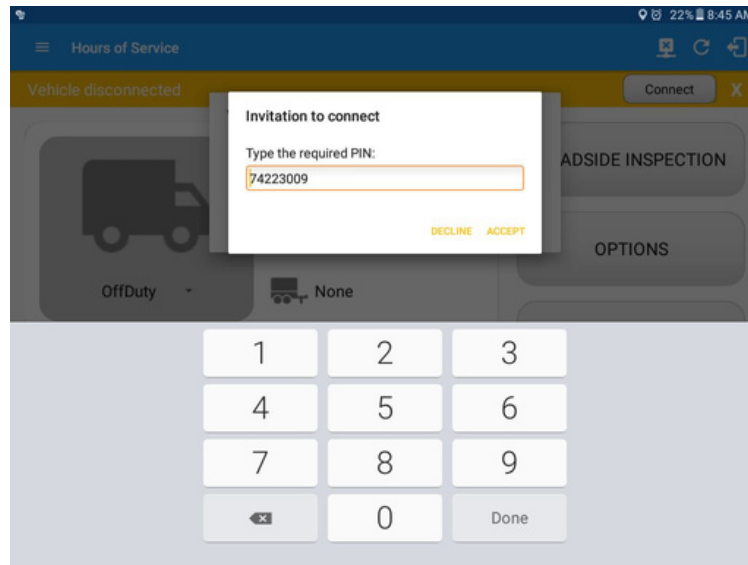
Programming Guide to the Azuga ELD[®] Platform

- o A dialog will then display the asking if you want to connect to the Digi WVA device.



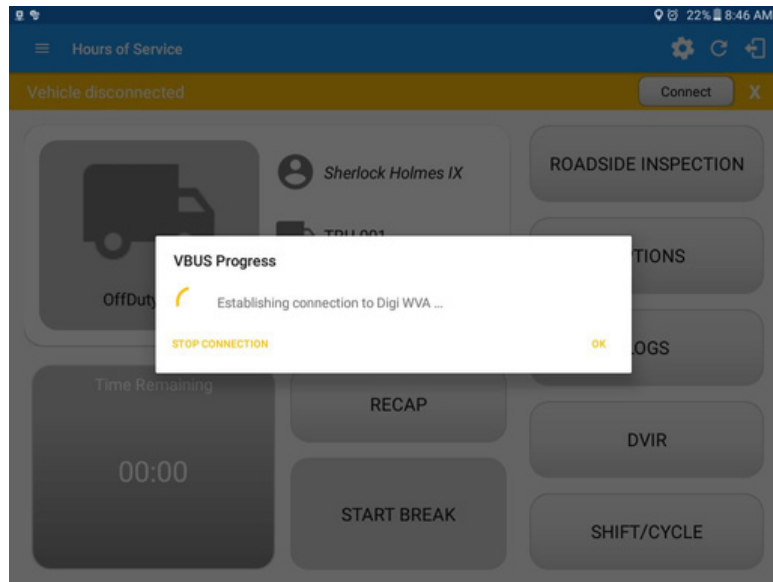
- o Tap Yes button, then a dialog will be displayed asking to enter the required Pin alongside with 'Accept' and 'Decline' buttons
- o Enter the Pin you recently configured and tap the Accept button

Programming Guide to the Azuga ELD[®] Platform



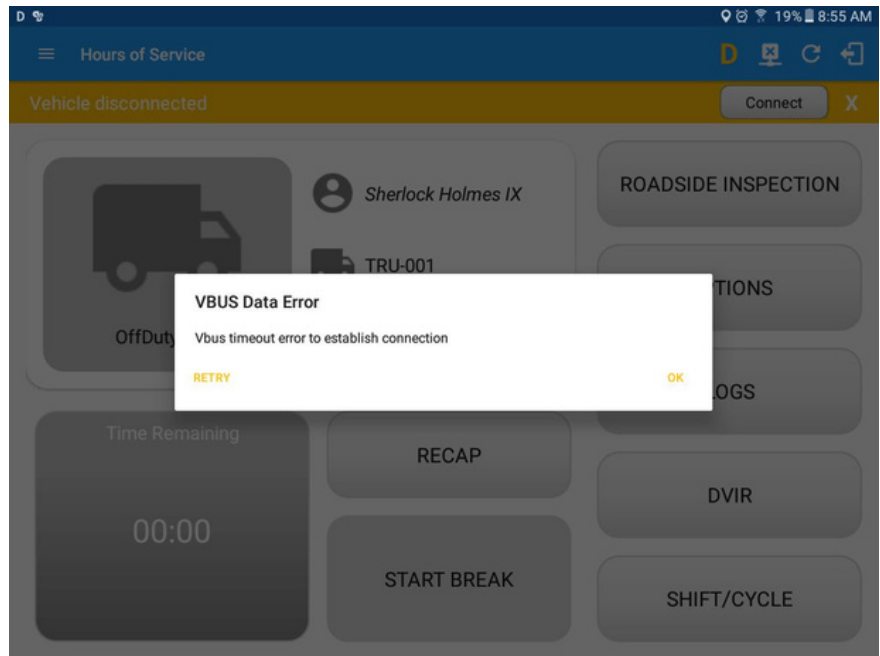
- o It will then display the VBUS Progress dialog upon establishing a connection to the selected VBUS device along with a 'Stop Connection' and 'Ok' buttons
 - Tap 'Stop Connection' button to stop establishing VBUS connection.
 - Tap OK button to hide the VBUS Progress dialog while establishing VBUS connection.

Programming Guide to the Azuga ELD[®] Platform



- If the VBUS connection results to an error (given the following situations below), an error dialog will display.
 - VBUS Connection Error
 - Interrupted Internet Connection
 - VBUS Power Failure

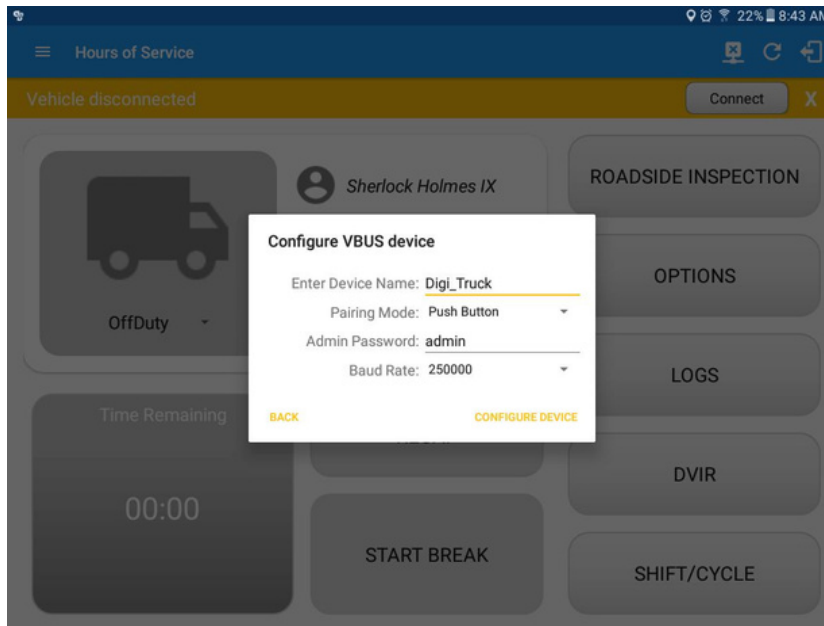
Programming Guide to the Azuga ELD[®] Platform



Note: The app will automatically disconnect from the device after attempting to connect for 1 minute and 30 seconds without receiving any data from the VBUS device.

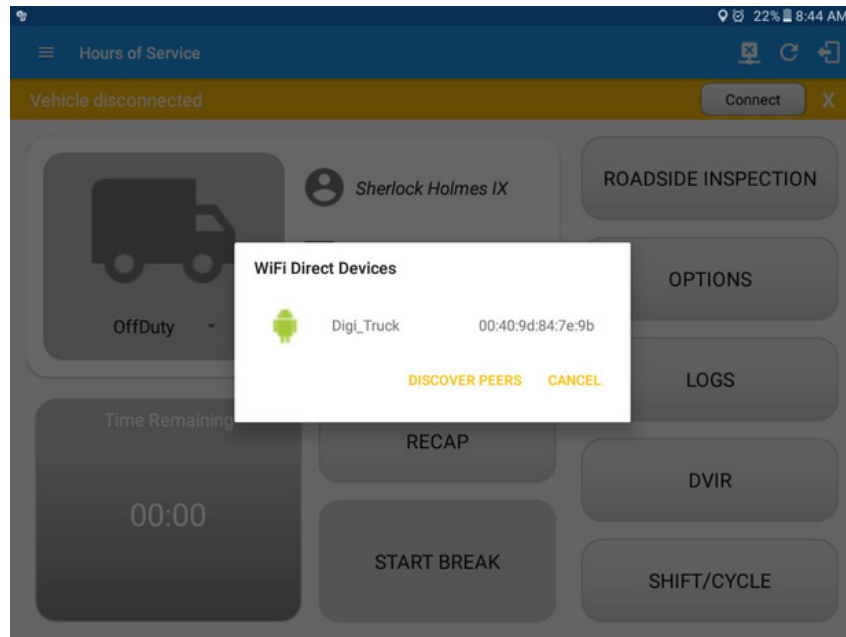
- o Wait until the Device shows as 'Connected' status
- If you select Push Button mode

Programming Guide to the Azuga ELD[®] Platform

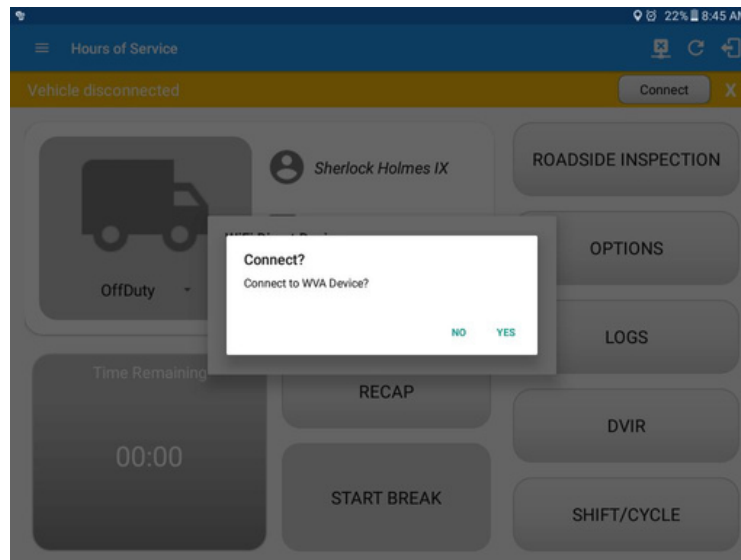


- o Tap on the drop-down option and select 'Push Button'
- o Input an admin password on the 'Admin Password' field. (Note: The admin password field will be auto populated by the Digi WVA VBUS device's default admin password)
Select a Baud Rate on the 'Baud Rate' drop down option list
- o Then tap 'Configure Device' button
- o The device will show up in the Available devices after the Discover Peers process
- o

Programming Guide to the Azuga ELD® Platform



- o Hold the Digi WVA button down for 3 seconds (do not hold down for more than 3 seconds or you will have to repeat the entire process).

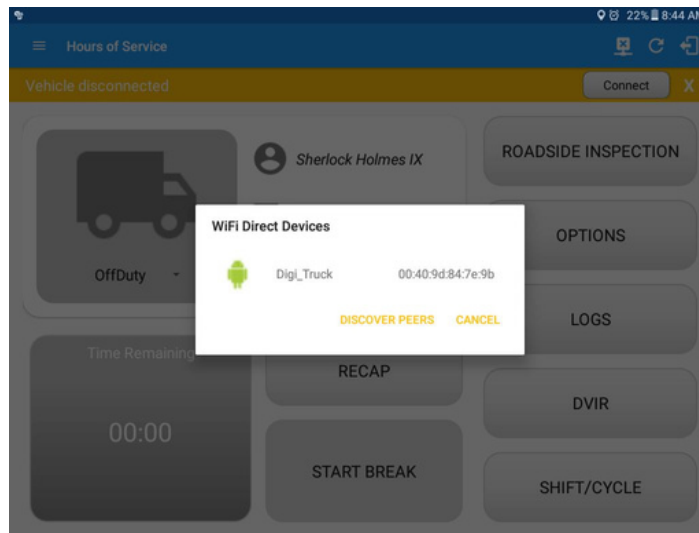


Programming Guide to the Azuga ELD[®] Platform

oAfter successfully pressing the Digi WVA button, the device status will then be shown as 'Connected'

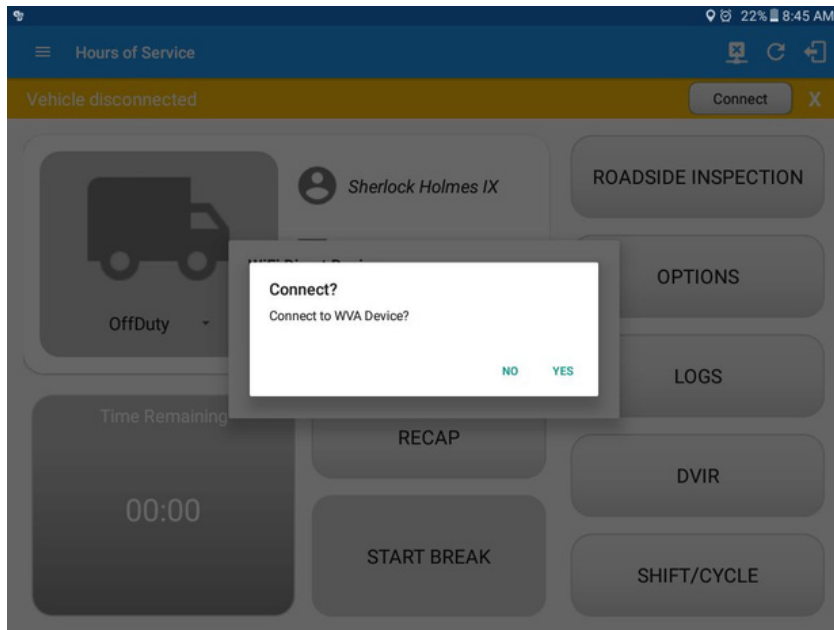
Note: If this did not work please follow the below manual setup method to connect to the Digi WVA in Wi-Fi direct mode. Prior to following the manual setup method you will need to press the WVA button on the device and hold it down for at least 10 seconds in order to reset the device to its original factory settings.

7. Connect to a WiFi Direct Digi device already configured
 - a)For a Digi WVA device configured for PIN Pairing mode.
 - oTap 'Skip' button

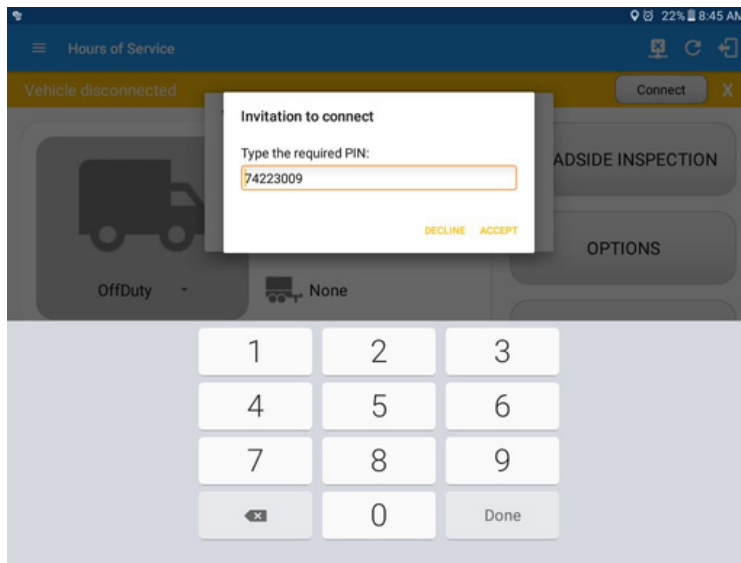


- o The device will show up in the Available devices after the Discover Peers process
- o Tap the device name you recently configured
- o A dialog will then display the asking if you want to connect to the Digi WVA device.

Programming Guide to the Azuga ELD[®] Platform



- o Tap Yes button, then a dialog will be displayed asking to enter the required Pin alongside with 'Accept' and 'Decline' buttons
- o Enter the Pin you recently configured and tap the Accept button



- o Device should show as 'Invited'
- o Wait until the Device shows as 'Connected' status

Programming Guide to the Azuga ELD[®] Platform

b) For a Digi WVA device configured for Push Button pairing.

o Tap 'Select Device' button

o The device will show up in the Available devices after the Discover Peers process

o The device should show as 'Invited' status

o Hold the Digi WVA button down for 3 seconds (do not hold down for more than 3 seconds or you will have to repeat the entire process). After successfully pressing the Digi WVA button, the device status will then be shown as 'Connected'

B. Auto Connection

■ Prerequisites to successfully perform Auto Connection

o Create/Update a preconfigured device in the Portal's Equipment Management Page or in the App's Manage Vehicles/Trailers screen

o Updating and setting the ELD Configurations of an existing Equipment

● Tap the Edit icon of an existing equipment you want to use for connecting to Digi WVA VBUS device

● Select Digi WVA VBUS device and connection type

● Enter a Device Name

● Enter the MAC Address of the Digi VBUS device

● Enter an admin password of the Digi VBUS device on the Admin Password field (Optional)

● Tap Save button to save the changes made

1 Tap on the Connect button in the 'Connect to Vehicle' dialog

. The 'VBUS Progress' dialog will then display

2 Upon establishing a connection to the VBUS device, you should hear a tone letting you know that device is now connected.

3

2.2 Digi WVA Configuration via Web Browser

Programming Guide to the Azuga ELD[®] Platform

a. Connect to WVA hot spot

1. Go to the wireless connections on your computer. The WVA will announce itself as a hotspot wireless network using the naming convention of wva-mac-address.



2. Connect to WVA on Wi-Fi using PASS from QR Label as shown below:

QR Label



Passcode for Wi-Fi



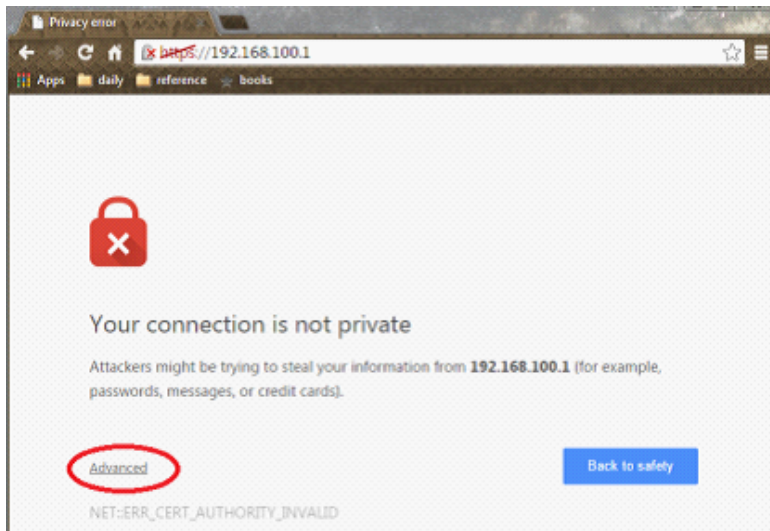
Programming Guide to the Azuga ELD[®] Platform

b.WVA Configuration

1. Open your web browser and type in the following URL in order to connect to the device configuration homepage: 192.168.100.1

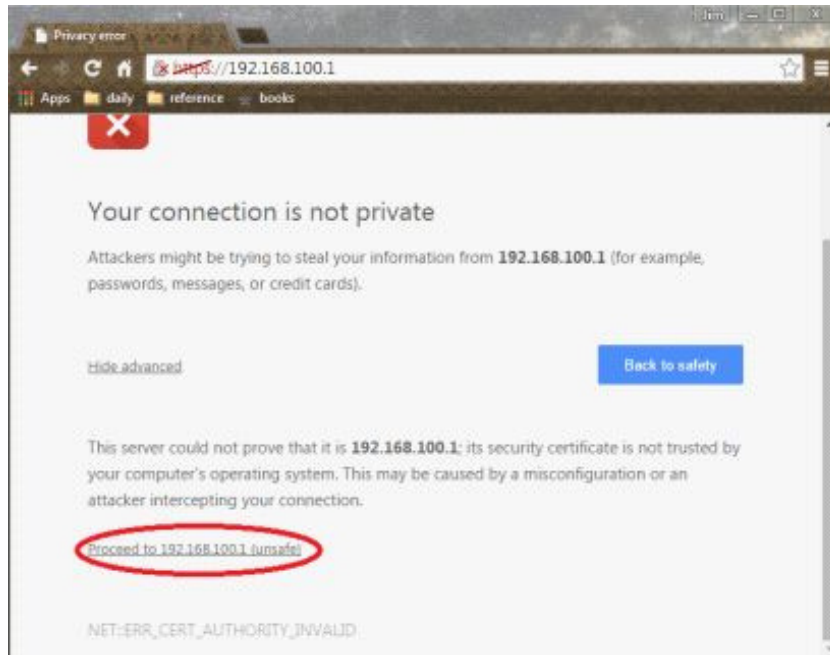


2. The following message may be displayed. If so, click on Advanced.



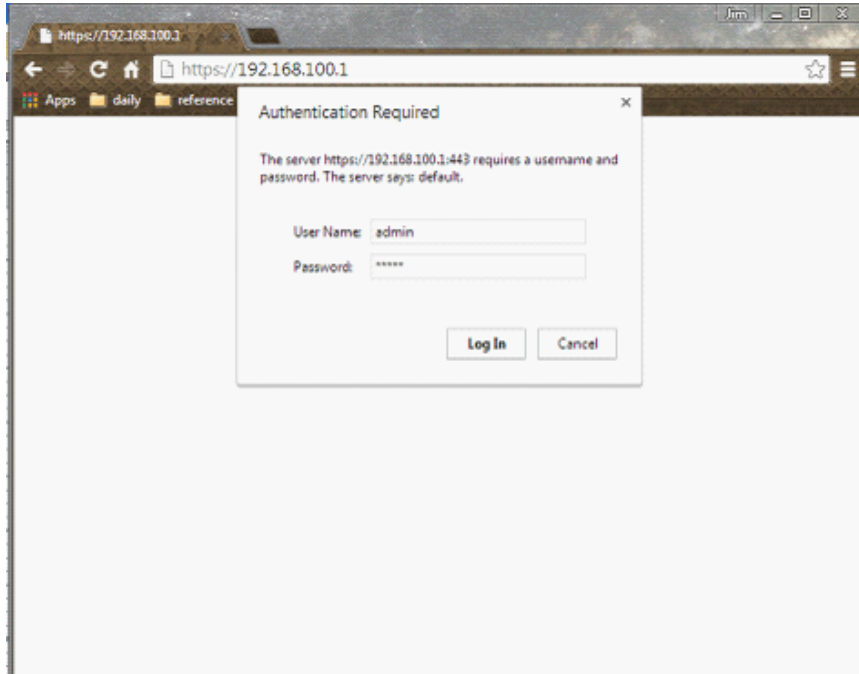
Programming Guide to the Azuga ELD[®] Platform

3. Click on Proceed to 192.168.100.1 (unsafe)



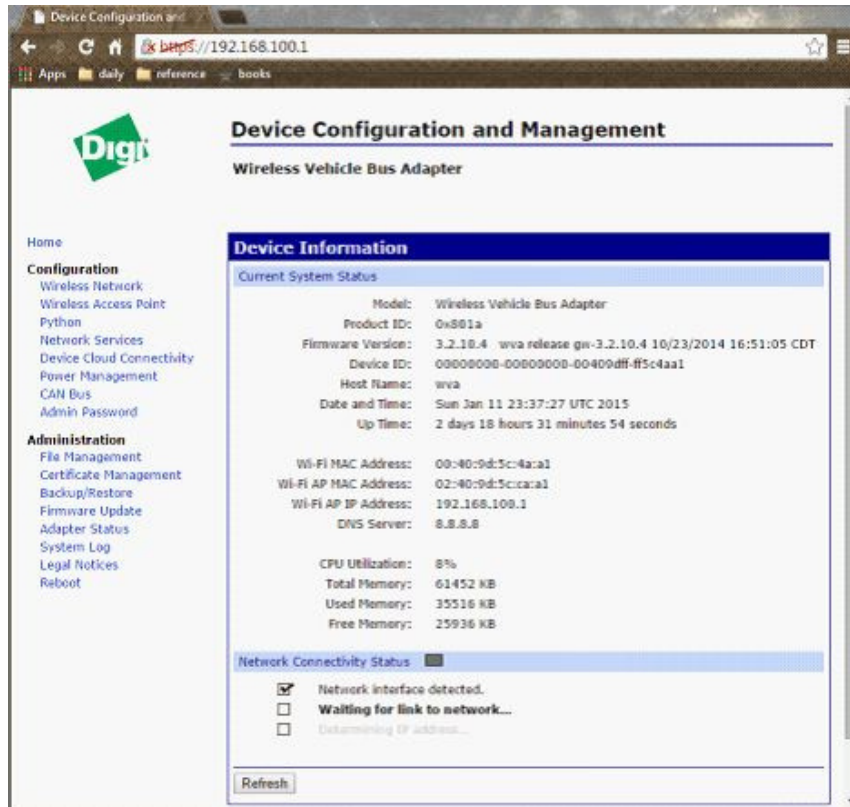
Programming Guide to the Azuga ELD[®] Platform

4. Authenticate using admin for both username and password.



Programming Guide to the Azuga ELD[®] Platform

5. User is at the device configuration homepage.



c. Confirm Adapter Status

- 1 Click the Adapter Status tab
- . Verify there are values being displayed for the CAN Bus Statistics, example below
- 2
- .

Programming Guide to the Azuga ELD[®] Platform

Wireless Vehicle Adapter Status

Current Wireless Network Status

Active SSID: off/any
Access Point: Not-Associated
Signal Level: N/A
Link Quality: N/A

Current Vehicle Status

VIN: N/A
Engine Speed: 4016.000 rpm
Vehicle Speed: 125.492 km/h

CAN Bus Statistics

Bus	Bytes Received	Packets Received	Bytes Sent	Packets Sent
can0	113640	14205	433	141
can1	0	0	0	0

Refresh Once Refresh Automatically

Automatic refresh requests a status update every 5 seconds.

3.If the values remain as 0, click on the Refresh Once button and wait a few seconds to see if the values change

4.If the values still do not change proceed to the section below for 'Change CAN Bus Configuration'. Else if you see values skip to the section titled 'Configure the WVA for Wi-Fi Direct'.

d.Change CAN Bus Configuration

- 1 Click the CAN Bus tab to configure the device Bus settings
 - . Change the Baud Rate for CAN Bus 1 and CAN Bus 2 from 'Auto Baud' to '25000'

2

CAN Bus Configuration

Current Settings

Each CAN bus may be individually configured.

CAN Bus 1 Settings

Enable CAN Bus
Baud Rate: 250000

CAN Bus 2 Settings

Enable CAN Bus
Baud Rate: 250000

Apply

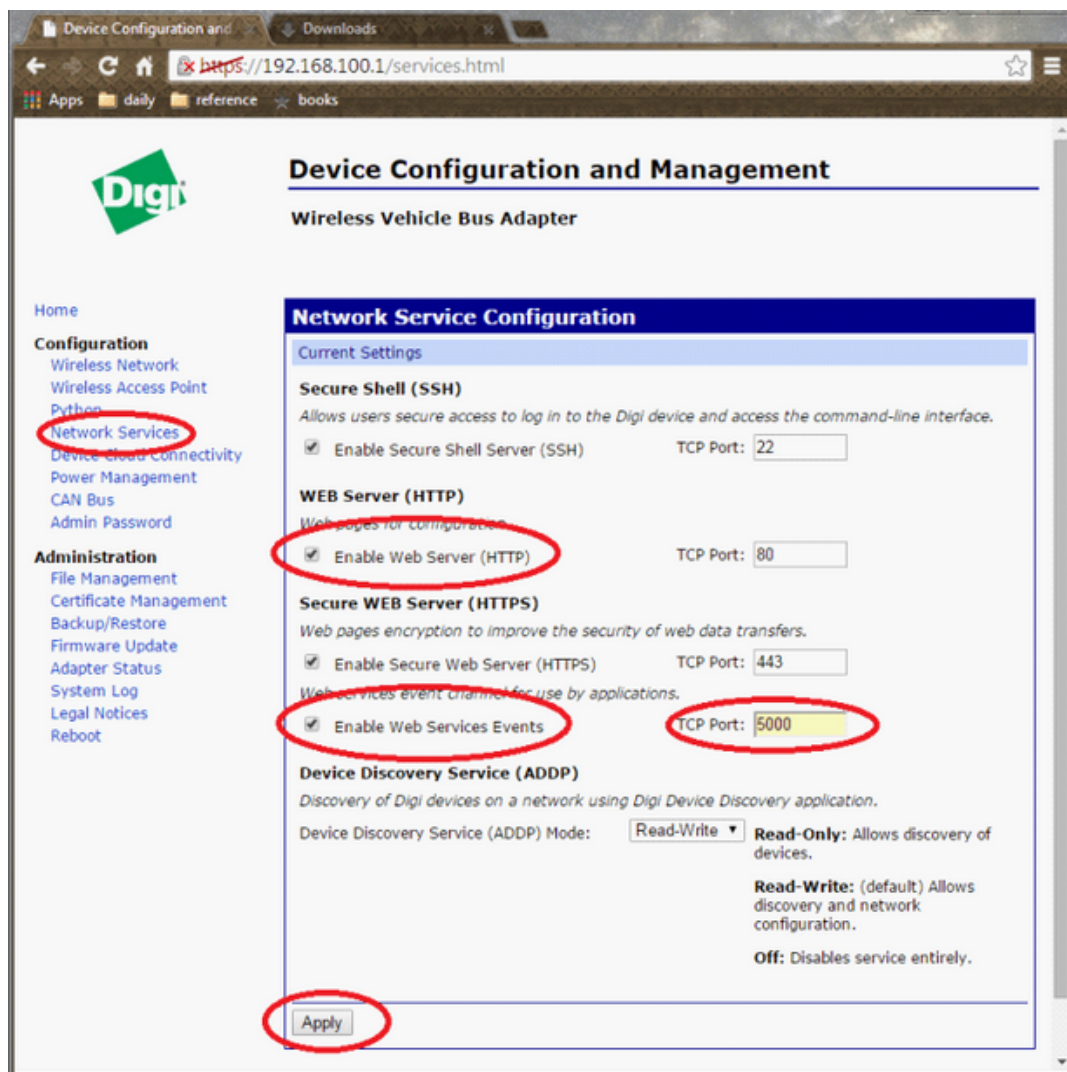
- 3 Click Apply and wait a few seconds
 - . Confirm the Adapter status by following the steps described in the above
- 4 section Verify values are being displayed for the CAN Bus Statistics
 - . If the value does not change repeat the above steps and select another baud
- 5 rate

- .
- 6
- .

Programming Guide to the Azuga ELD[®] Platform

e. Configure WVA for Wi-Fi Direct

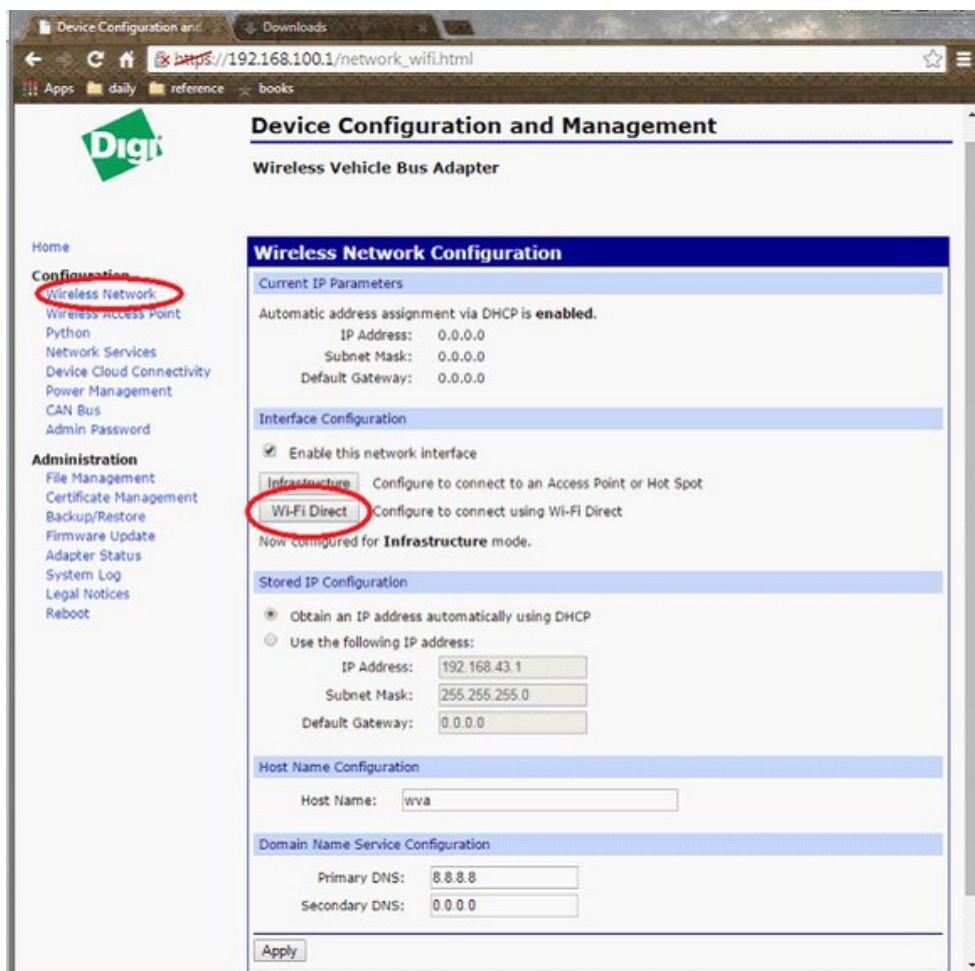
1. Click Network Services tab to get to Network Service Configuration screen.
2. Enable Web Server (HTTP)
3. Enable Web Services Events on TCP Port 5000
4. Click Apply
5. Wait for 2 minutes then refresh the page and confirm the above settings were applied



Programming Guide to the Azuga ELD[®] Platform

6. Click Wireless Network tab

7. Click Wi-Fi Direct button



8. Enter in a Device Name. The name must contain the contiguous text "Digi_WVA". You can also add the vehicle number associated with the device as in the example below

Programming Guide to the Azuga ELD[®] Platform

where "Digi_WVA_Truck_01" was entered. A VIN # as part of the name may be a great choice as well.

9. Select Push Button for the WPS Method and click the Finish button.

The screenshot shows a web browser window with the URL https://192.168.100.1/wizard_wifidirect.html. The page title is "Device Configuration and Management" and the subtitle is "Wireless Vehicle Bus Adapter". The main heading is "Wi-Fi Direct Configuration Wizard".

The form contains the following fields and options:

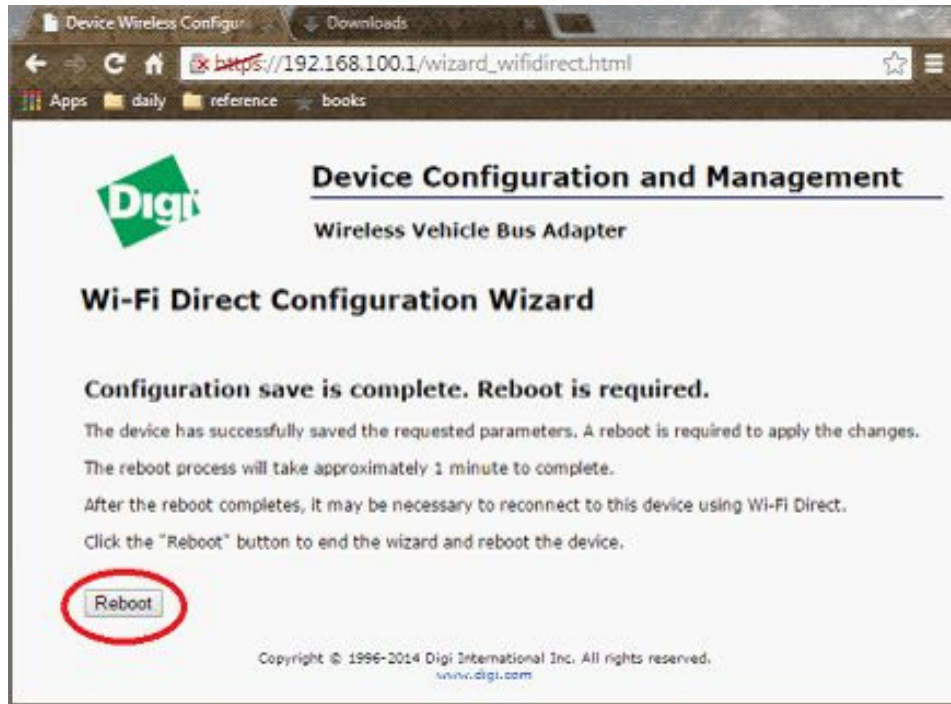
- Device Name:** A text input field containing "Digi_WVA_Truck_01".
- WPS Method:** A dropdown menu set to "Push Button".
- Reconfigure IP addresses for Wi-Fi Direct

Below the form, there is a instruction: "Click 'Finish' to continue or 'Cancel' to end the wizard and return to the Wireless Configuration page." Two buttons, "Finish" and "Cancel", are displayed. The "Finish" button is circled in red.

At the bottom of the page, the copyright notice reads: "Copyright © 1996-2014 Digi International Inc. All rights reserved. www.digi.com"

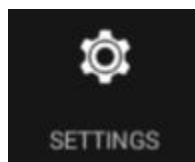
Programming Guide to the Azuga ELD[®] Platform

10. User will be asked to reboot. User must reboot in order to complete the install.



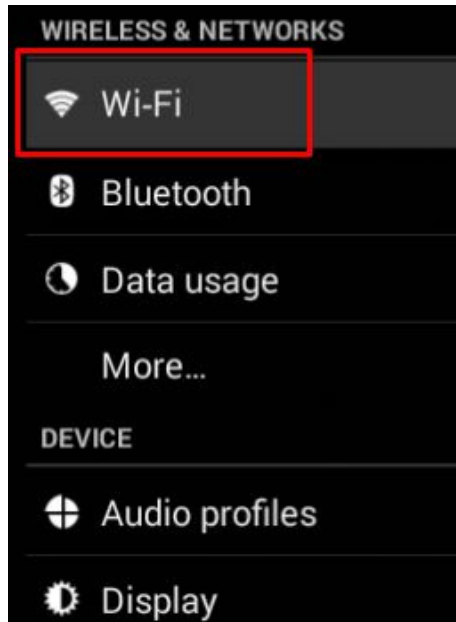
f. Initial Pairing of Device

1. On the Android tablet tap on the Settings icon



Programming Guide to the Azuga ELD[®] Platform

2. Tap on Wi-Fi



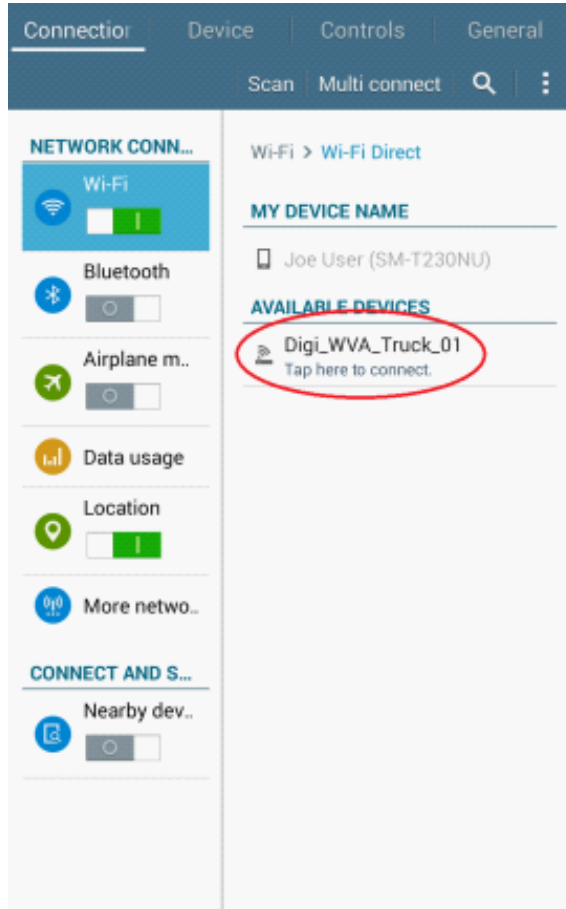
3. On the Wi-Fi screen tap on the additional options icon at the top right and select Wi-Fi Direct



4. Tap on the WVA Wi-Fi Direct network and immediately afterwards press the button on the WVA device for 3 seconds. Do not press the button any longer than ten seconds as this will reset the device

Programming Guide to the Azuga ELD[®] Platform

and user will have to start over.

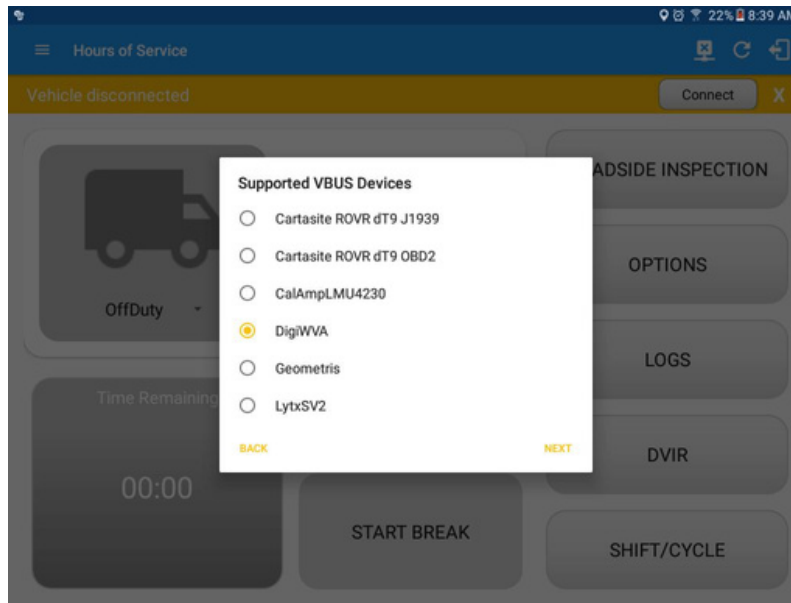


5. Once the initial pairing is complete the device is ready for use with the Azuga ELD android application.

g. Launching Azuga ELD HOS App and connecting it to a WiFi Direct device already configured

1. Ořen Auga ELD App
- 2 Log into the app
 - . On the main dashboard, tap the 'Connect' button which is located below the app header
- 3 Tap on 'Manual Connection' button
 - . Select VBUS device - "Digi WVA"
- 4
- .
- 5
- .

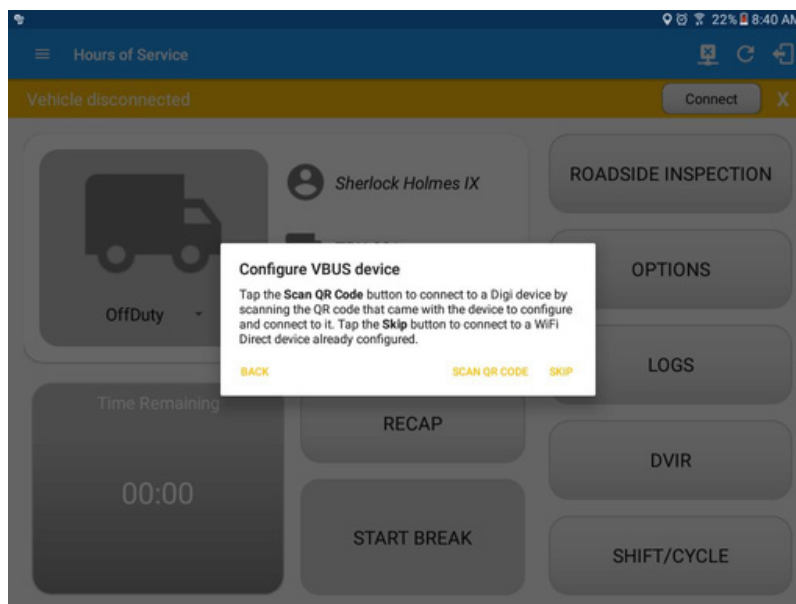
Programming Guide to the Azuga ELD® Platform



6. Tap on the 'Next' button

7. The 'Configure VBUS device' dialog will then display

8. You have the option to scan the QR code that came with your device or connect to it yourself via Wifi-Direct. In this example, we will be connecting via Wi-Fi Direct device already configured. Tap "Select Device" Button.

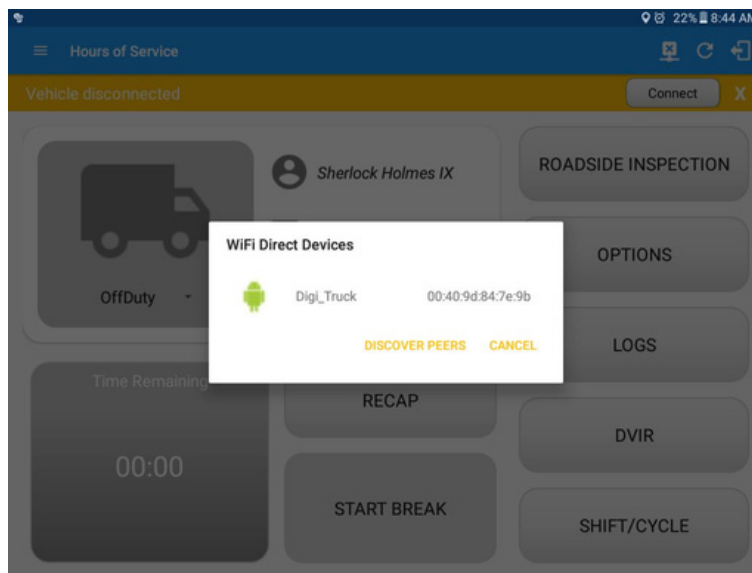


Programming Guide to the Azuga ELD[®] Platform

(Note: If you haven't configured a WiFi Direct device, you can also select the Scan QR Code option. Refer to 2.1 A. Manual Connection Step #6 for the instructions.)

9. Tap on the WiFi direct device name: "Digi_Truck"

(Note: If the WiFi Direct device is paired through 'Push Button' mode then you will see the device as 'Invited' screen. Hold WVA button down for 3 seconds (do not hold down for more than 3 seconds or you will have to repeat the entire process). If the WiFi Direct device is paired through 'Pin' mode, then it will ask you for a PIN)

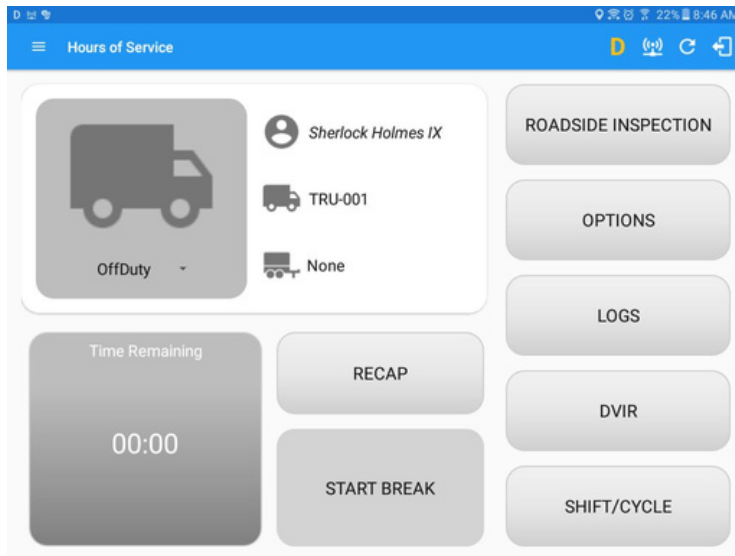


10. You should hear a tone letting you know that device is now connected.

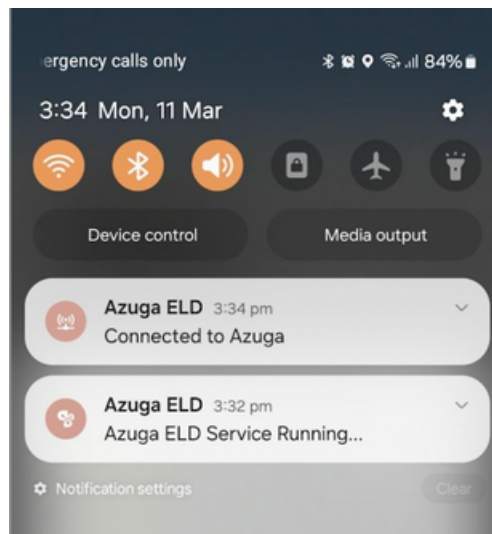
11. To check if you are successfully connected to the Digi Test Wi-Fi Direct network, navigate to the

Main Dashboard and the VBUS status indicator should be displayed as "Connected" which is located on the app header

Programming Guide to the Azuga ELD[®] Platform



12. You can also check on the Android Notification Bar and you should see the VBUS Service status as “Connected”



Troubleshooting Steps

1. Exit out of the Auga ELD application
2. Go to Settings on the Android device and verify that the device is connected to the WVA Wi-Fi Direct network

Programming Guide to the Azuga ELD[®] Platform

- 3 If the network status states 'Available' tap on the network to initiate a connection
- . If the WVA Wi-Fi Direct network is not displayed tap on the Search button at the top of the Wi-Fi Direct screen to
- 4 search for the network
5. Once the connection has been confirmed repeat the previous section for "Azuga ELD Mobile App Settings"