

Programming Guide to the Azuga ELD[®] Platform

Installation of ATBS Interpreter Device for use with Azuga ELD .

Note: The first few instructions below is for an initial connection to the ATBS Interpreter device. If you have already paired the ATBS Interpreter device to your phone or tablet, proceed to Step 4.

Step 1 – Connect the device using ATBS Interpreter to AT1939 Adapter Cable.



1. The device plugs directly into the AT1939 adapter cable. The cable then plugs into the vehicle's AT1939 socket. The device does not have special prerequisites or require installation from authorized personnel.
2. After the device is plugged into the socket, the red LED turns on and stays on constantly. This means the device is powered and operational. The green LED lights come on when data is being transmitted.

Step 2 – Enable Bluetooth functionality on your Android phone or tablet.

- 1 From the main screen, Go to Settings.
 - . Tap Bluetooth (under connections).
- 2 Tap the switch for "OFF" to "ON" position to turn on Bluetooth and put your Android phone or tablet into pairing mode.
 - .
- 3
- .

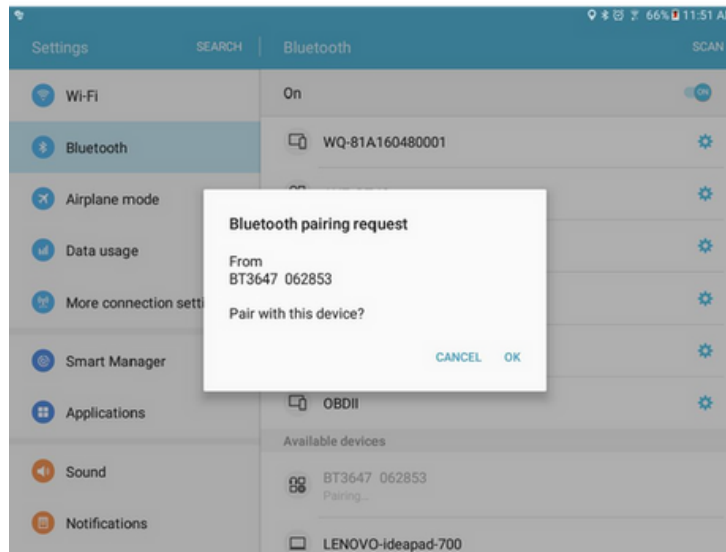
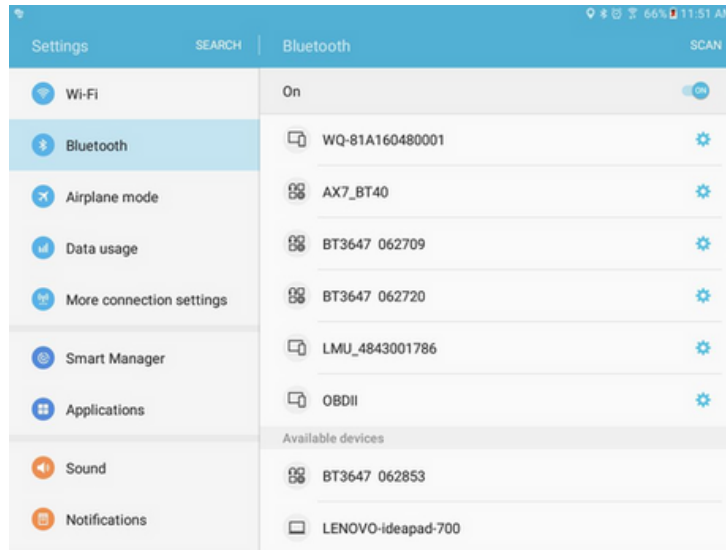
Step 3 – Pair your Android phone or tablet with the ATBS device.

1. Upon completion of Step 2 above, the Android phone or tablet should display a list of available Bluetooth devices. In case the list is not available, tap on the "Scan for Devices" or "Search" button.
2. After a few seconds, the "BT3647 062853" device should appear on the list of the Available Devices. If the device is not available in the list, make sure you are in close

Programming Guide to the Azuga ELD[®] Platform

proximity to the ATBS Interpreter device (less than 32 feet or 10meters), and the ATBS Interpreter device is powered on (see Step 1 above).

3. Tap on the “BT3647 062853” ATBS Interpreter bluetooth device, then the device goes into pairing mode and the “Pairing...” message is displayed.

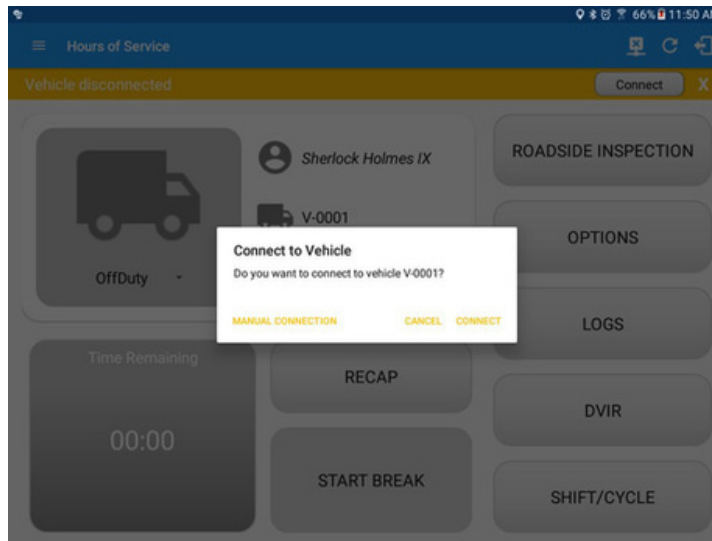


Programming Guide to the Azuga ELD[®] Platform

4. You can rename the paired “BT3647 062853” device into something more meaningful, like “Truck 1” if you prefer. Tap on the blue gear button (*) to “Rename” or “Unpair” the device.

Step 4 – Use the Azuga ELD Mobile App with the paired ATBS Interpreter device.

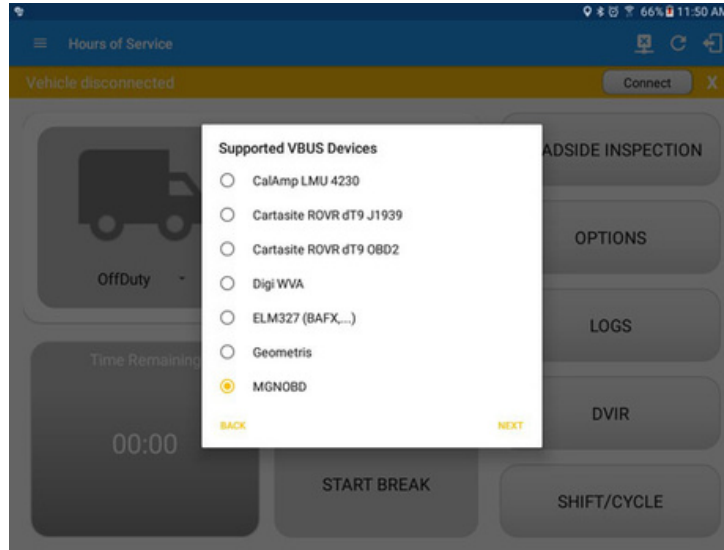
1. Open Azuga ELD app (or Branded App)
2. Tap on the VBUS icon (or Tap the Connect button on the Connection bar)



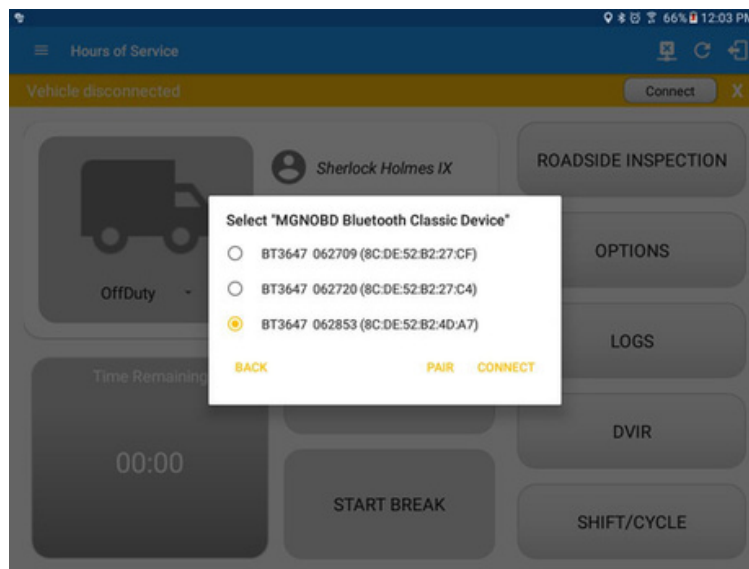
3. At this point, 2 options were present in order to establish a connection to the VBUS device: Manual Connection and Auto Connection.
 - a. Manual Connection
 - Tap on the Manual Connection button

Programming Guide to the Azuga ELD[®] Platform

- Select VBUS Device – MGN0BD

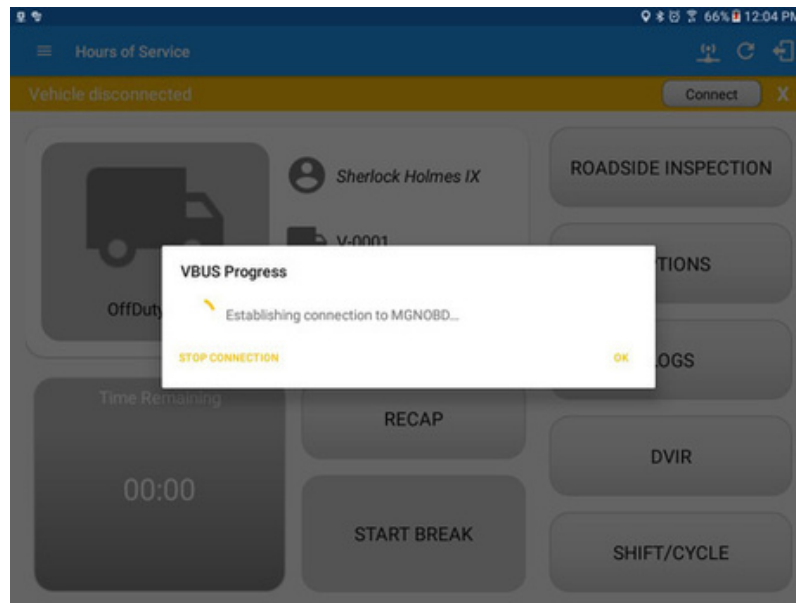


- Tap on the Next button
- It will then display the list of available devices along with the following buttons:
 1. Back button – tapping this button will go back to the previous Supported VBUS devices dialog
 2. Pair button – tapping this button will open the Android Device Settings > Bluetooth screen, to be able to pair devices
 3. Connect button – Select 'BT3647 062853' from the device list then tap the Connect button.



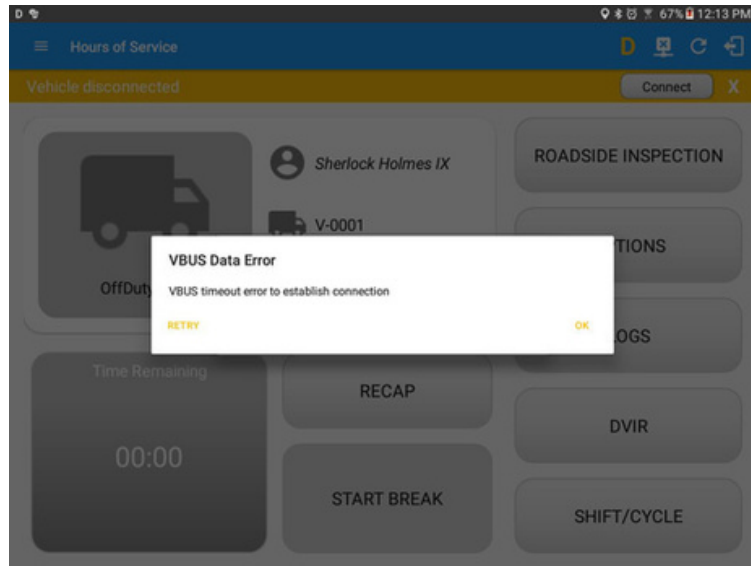
Programming Guide to the Azuga ELD[®] Platform

- It will then display the VBUS Progress dialog upon establishing a connection to the selected VBUS device along with a 'Stop Connection' and 'Ok' buttons.
 1. Tap 'Stop Connection' button to stop establishing VBUS connection.
 2. Tap OK button to hide the VBUS Progress dialog while establishing VBUS connection.



- If the VBUS connection results to an error (given the following situations below), an error dialog will display.
 - VBUS Data Error

Programming Guide to the Azuga ELD[®] Platform

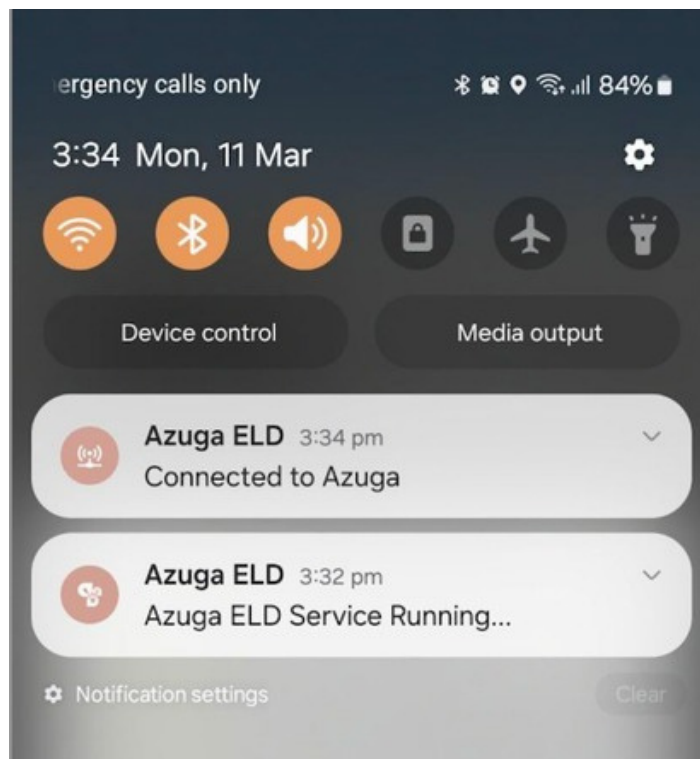


- VBUS timeout error to establish connection

- Note: The app will automatically disconnect from the device after attempting to connect for 1 minute and 30 seconds without receiving any data from the VBUS device.

After a successful VBUS connection, You should hear a tone letting you know that the device is now connected.

- To check if you are connected, go to the Android Notification Bar and you should see the following message.



Programming Guide to the Azuga ELD[®] Platform

- Check also that the VBUS indicator is now changed to a WiFi icon (during successful connection)
- The device and the application are now connected.
- **Auto Connection**
 - Tap on the Connect button
 - The VBUS Progress dialog will then display
 - Upon establishing a connection to the VBUS device, You should hear a tone letting you know that device is now connected.
 - **Prerequisites to successfully perform Auto Connection**
 - Create a Preconfigured device in the Portal's Equipment Management Page or in the App's Manage Vehicles/Trailers screen or
 - Once a manual configuration has been made for the particular vehicle, the VBUS information is stored and next time an automatic connection can be made.