

Programming Guide to the Azuga ELD[®] Platform

Installation of IOSix Device for use with Azuga ELD.

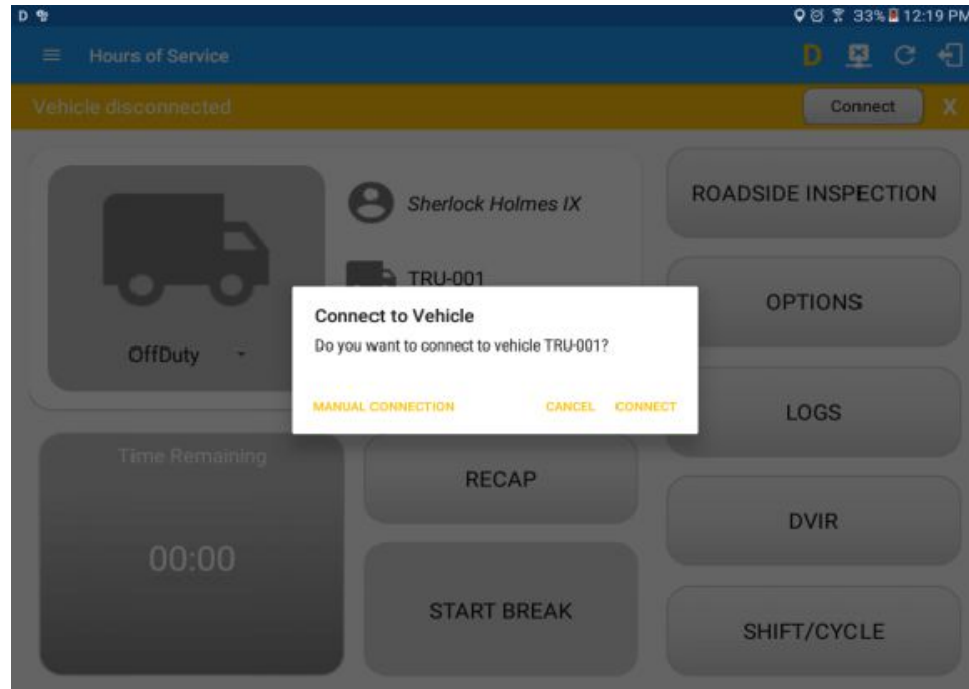


- Open Azuga ELD app (or Branded App)
- Login to the app using a driver user account
- On the main dashboard, tap the 'Connect' button which is located below the app header to display the 'Connect to Vehicle' dialog.
- At this point, 2 options were present in order to establish a connection to the VBUS device: Manual Connection and Auto Connection.

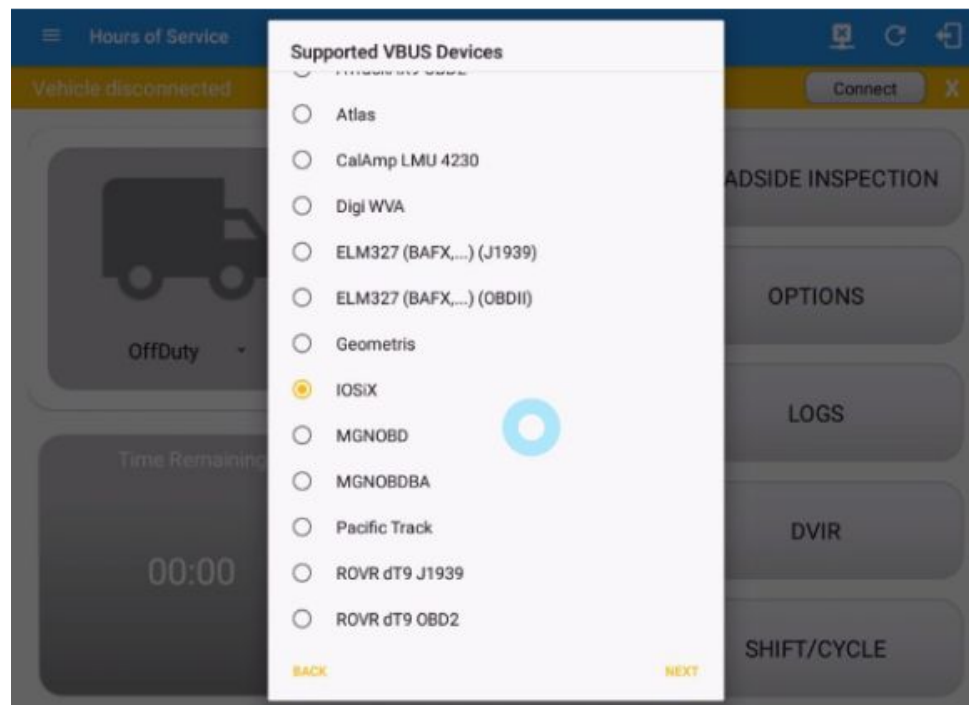
A.Manual Connection

Programming Guide to the Azuga ELD® Platform

- Tap on the 'Manual Connection' button



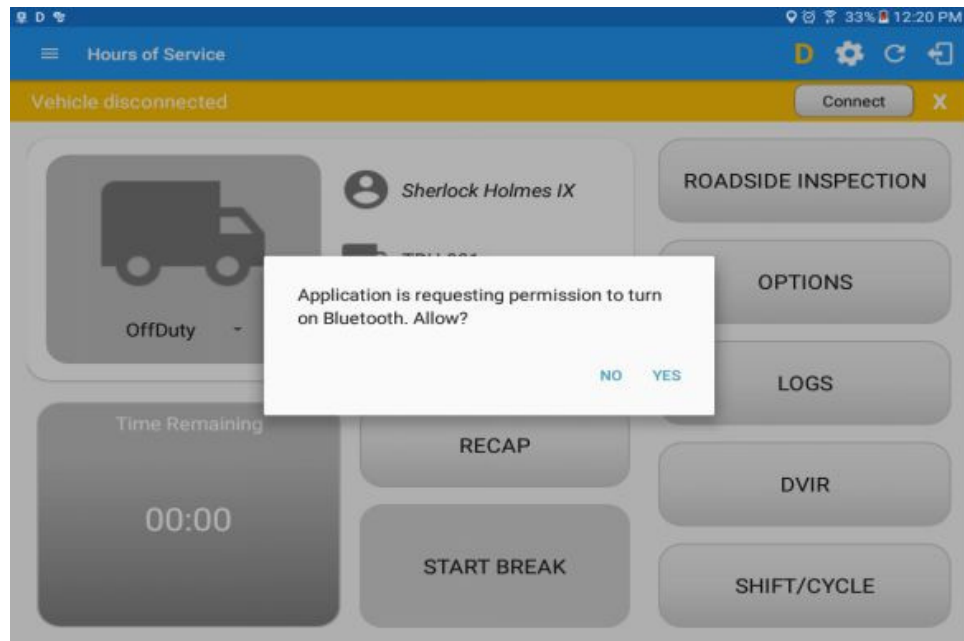
- Select VBUS Device - IOSix



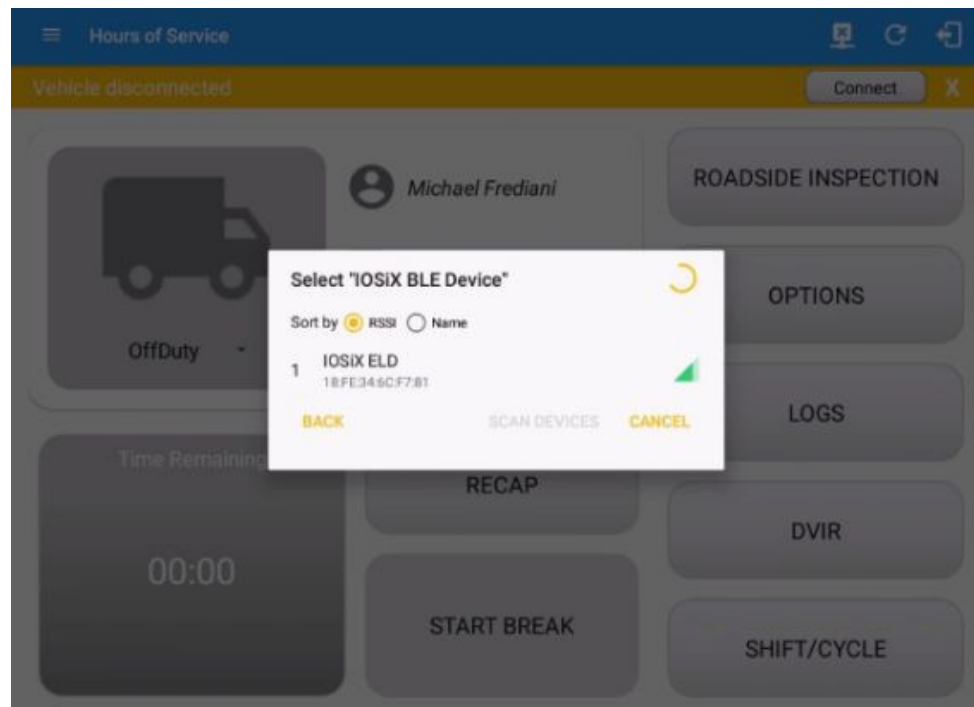
- Tap on the Next button

Programming Guide to the Azuga ELD® Platform

- If the Bluetooth of the device is disabled, the 'Bluetooth Permission Request' dialog will be displayed.
- Tap on the Yes button to enable the Bluetooth of the device

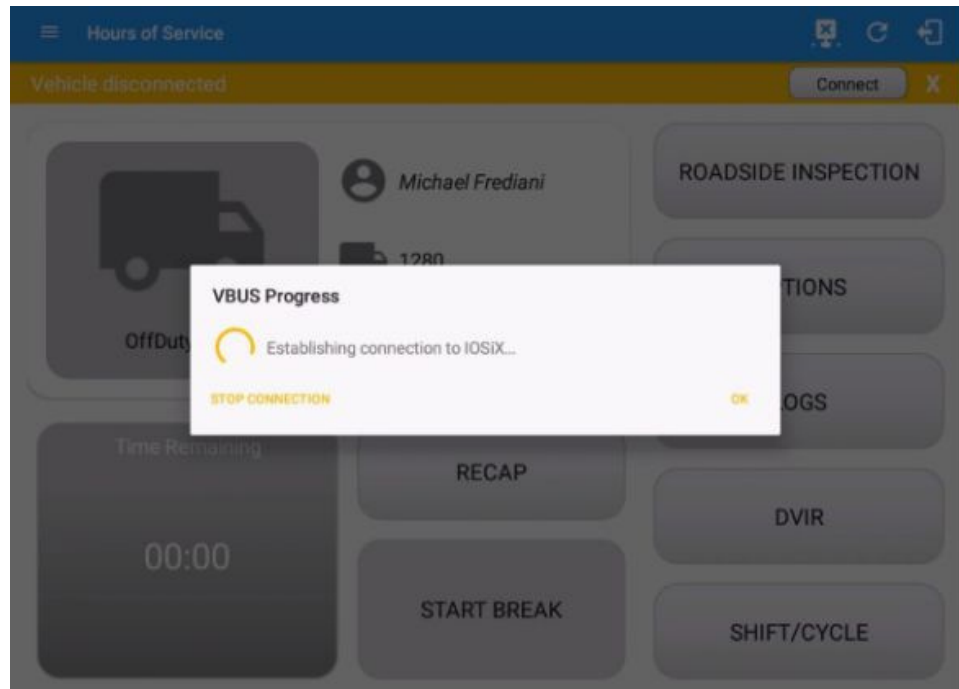


- Choose the correct Bluetooth device from the list



Programming Guide to the Azuga ELD[®] Platform

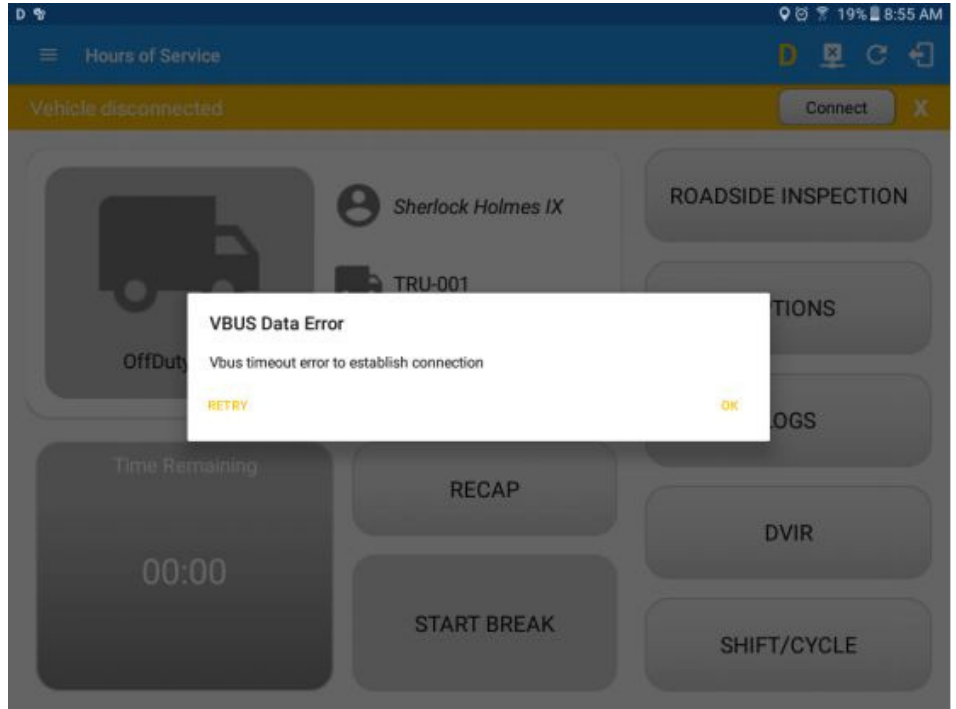
- It will then display the VBUS Progress dialog upon establishing a connection to the selected VBUS device along with a 'Stop Connection' and 'Ok' buttons:
 - A. Tap 'Stop Connection' button to stop establishing VBUS connection.
 - B. Tap OK button to hide the VBUS Progress dialog while establishing VBUS connection.



- If the VBUS connection results to an error (given the following situations below), an error dialog will display.
 - VBUS Data Error
 - i. Interrupted Internet Connection


Programming Guide to the Azuga ELD® Platform

ii. VBUS Power Failure



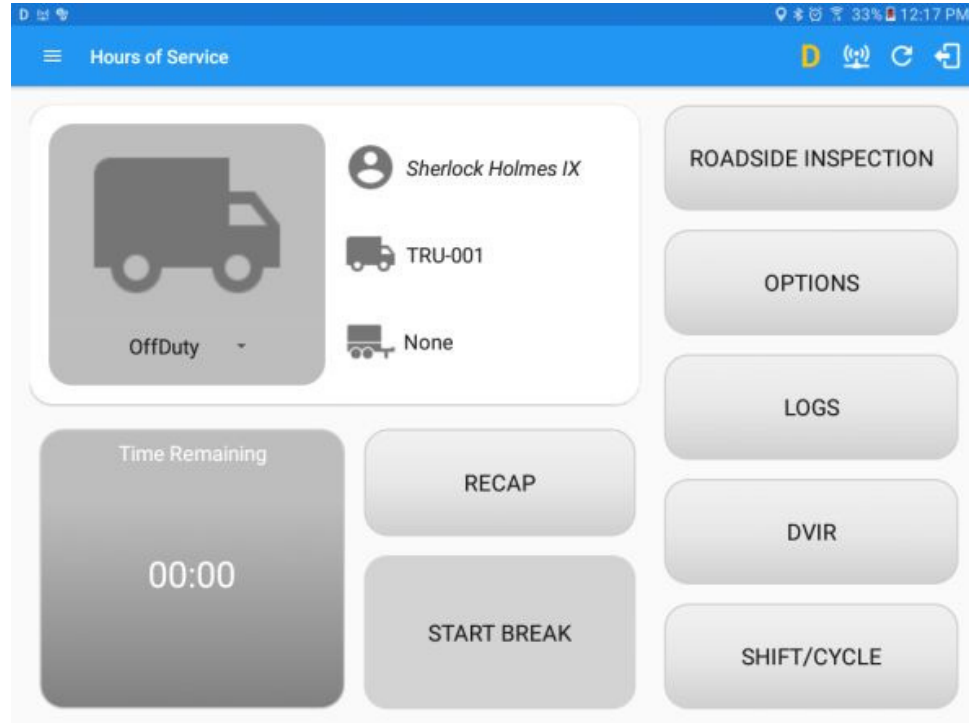
Note: The app will automatically disconnect from the device after attempting to connect for 1 minute and 30 seconds without receiving any data from the VBUS device.

- Upon establishing a connection to the VBUS device you should hear a tone letting you know that device is now connected.
- To check if you are connected, navigate to the Main Dashboard and the VBUS

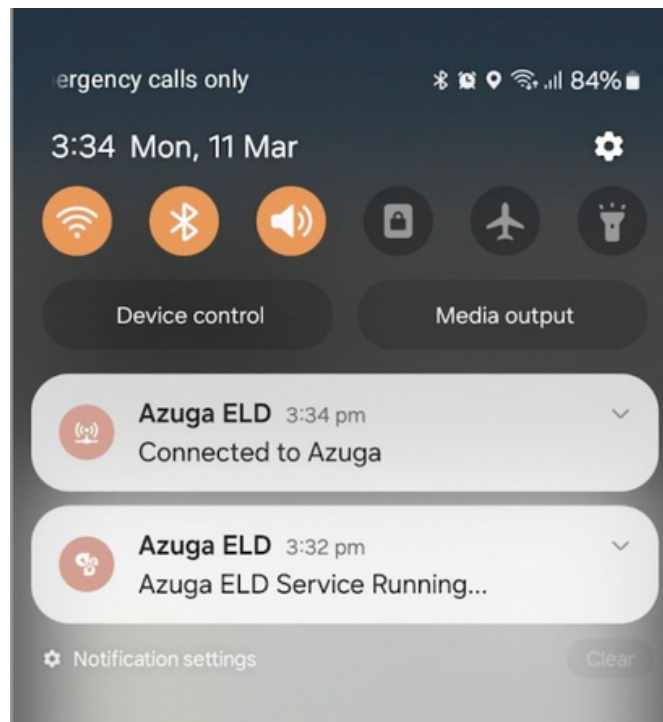
status indicator should be displayed as “Connected”  which is located on

Programming Guide to the Azuga ELD® Platform

the app header.



- You can also check on the Android Notification Bar and you should see the VBUS Service status as “Connected”.



Programming Guide to the Azuga ELD[®] Platform

- The device and the application are now connected.

B.Auto Connection

- Tap on the Connect button
- The VBUS Progress dialog will then display
- Upon establishing a connection to the VBUS device, You should hear a tone letting you know that device is now connected.

■ Prerequisites to successfully perform Auto Connection

○ Create a Pre-configured device in the Portal's Equipment

Management Page or in the App's Manage Vehicles/Trailers

screen

○ Set the ELD Configurations

Note: Only users allowed to Manage Equipment can create equipment in the app.